



Commonwealth Education Continuum Update

Dr. Amanda Ellis, Vice President, K12 Policies and Programs
Robin Hebert, Senior Fellow, K12 Policies and Programs
Kelli Norman, Senior Fellow, K12 Policies and Programs



1

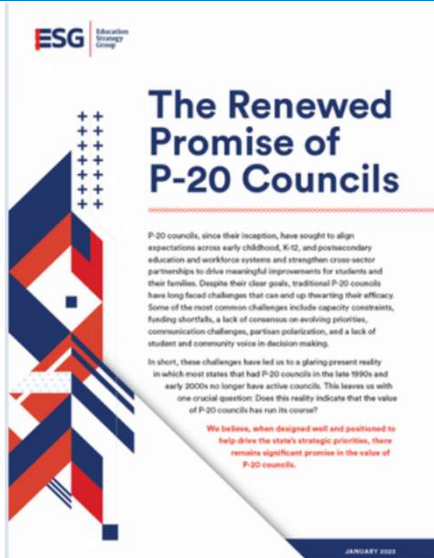
Commonwealth Education Continuum (CEC)

Formed out of the moral imperative to strengthen the education pipeline, the CEC is co-chaired by Lt. Gov. Coleman, Pres. Thompson and the Commissioner, and consists of 28 members ranging from early childhood to the workforce.

- **Purpose:** The CEC seeks to improve actions to ensure students can equitably earn the necessary degrees and credentials to enter the workforce successfully.
- **Annual Objective:** Develop and execute a specific plan to activate the biggest levers for increasing successful student transitions into postsecondary.

2

National Recognition for the CEC



As state leaders undoubtedly continue to seek strategies to drive improvement in their state's educational and economic realities, enhanced P-20 collaboration cannot be overlooked as a primary vehicle for improving educational attainment and economic mobility for all.

3

Removing Silos and Strengthening the Education Pipeline

Through collaborative efforts, the CEC has helped to influence change in the following areas:

- Dual Credit
- Summer Bridge Programs
- FAFSA completion
- College and Career Advising
- First year postsecondary success: Academic and Basic Needs
- Educator Recruitment and Retention
- Transition to the workforce and work-based learning opportunities

4



Kentucky Launch: Equitable and Accelerated Career Pathways for All



5

Overview

Launch: Equitable & Accelerated Pathways for All is a national college and career pathways initiative that strives for every learner to have access to and succeed in high-quality and equitable pathways.

We will do so by:

- Driving a national agenda for college and career pathways
- Working with state and local partnerships to advance equitable growth and scaling of pathways by tackling entrenched inequities in education and workforce systems
- Advancing pathways policies and strategies that help achieve greater scale and sustainability
- Seeding and growing next-generation models that will transform career pathways systems and dismantle entrenched barriers that perpetuate inequities in economic advancement

6

The case for building equitable pathways

When done right, college and career pathways:

- Provide intentional, career-aligned courses that span secondary and postsecondary education;
- Embed meaningful work-based learning experiences; and
- Lead to credentials of value.

The challenge:

- Gaps in access, quality and outcomes for learner groups - particularly Black and Latinx learners and learners experiencing poverty - persist
- Too few learners are earning credentials of value
- Too many learners do not finish their pathways and take on hard-to-pay debt

6

7

The Plain Vision

Every young person deserves:

- a high school diploma,
- a postsecondary credential with labor market value, and
- to be engaged in full time employment or continuing training toward

A family-sustaining career in an economically strong community.



8

The Launch Network

9

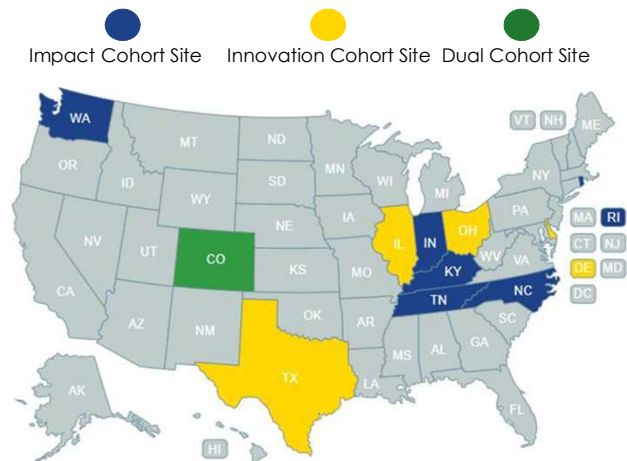
9

The Cohorts

Launch is supporting two distinct cohorts, each comprised of state and regional partners from across 11 states:

- State education and workforce agencies
- K-12 districts
- Postsecondary institutions
- Intermediary partners

Working to elevate the levers that drive systems change – **data, policy, funding, partnerships, and equity** – and help state and local sites create **equitable, sustainable systems** that are built to last.



10

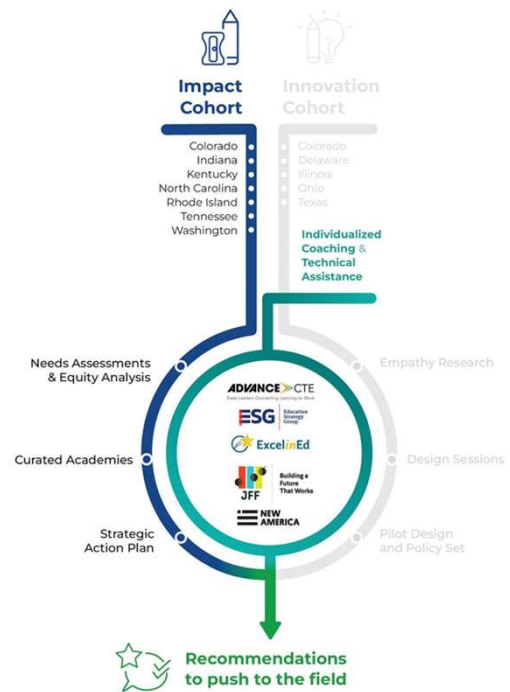
Impact Cohort

Seven geographically diverse teams selected because of their:

- Foundational work in creating pathways and enabling conditions that have built connections between K-12 schools, postsecondary institutions, and employers
- Shared commitment to ensuring every learner will earn the credentials needed to be fully employed and engaged in their communities

Impact Cohort Sites will:

- Undertake a three-month needs assessment
- Perform an equity scan
- Participate in four content-specific academies
- Develop a state-specific strategic action plan

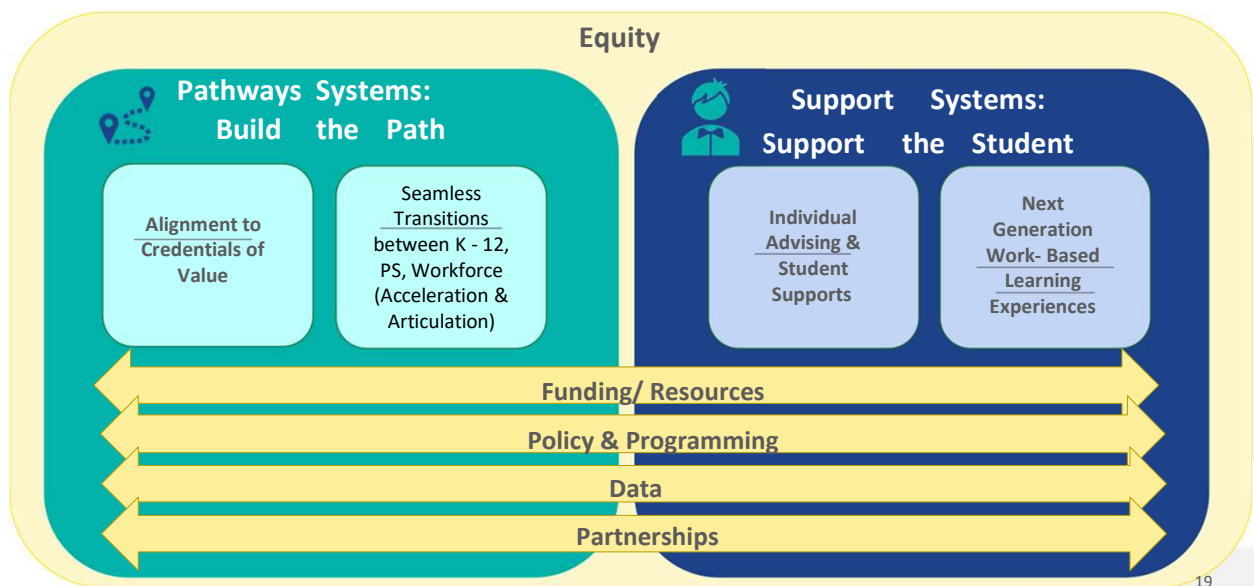


Kentucky's Scope & Timeline

Impact Cohort Structure



Impact Cohort: Organizing Framework



Kentucky's Launch Work Groups

Alignment to
Credentials of
Value

Deputy Secretary Beth Brinly, Chair
KY Education and Labor Cabinet

Seamless
Transitions
Between K12,
Postsecondary
and Workforce

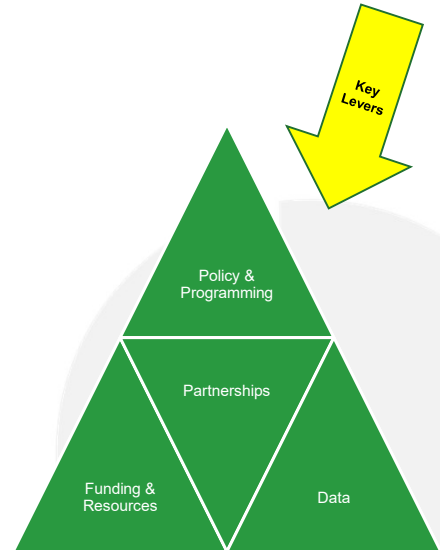
Tom Thompson, Chair
KY Department of Education

Individualized
Advising and
Career
Navigation
Supports

Mitzi Holland, Chair
KY Council on Postsecondary Education

Next Generation
Work-Based
Learning
Experiences

Regan Satterwhite, Chair
KY Department of Education



15

Suggested Scope and Sequence for Work Groups

Equity

- Session 2: Data
- Session 3: Policy
- Session 4: Funding
- Session 5: Partnerships
- Session 6: Recommendations

16

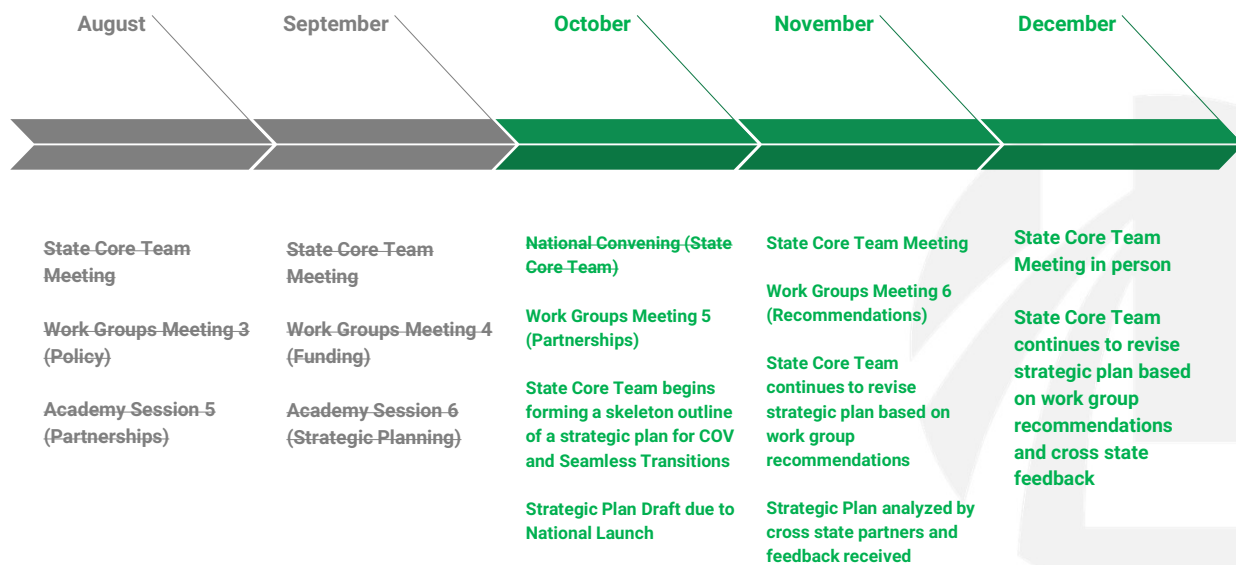
School District Profiles

Beau Johnston, Lead
Jefferson County Public Schools

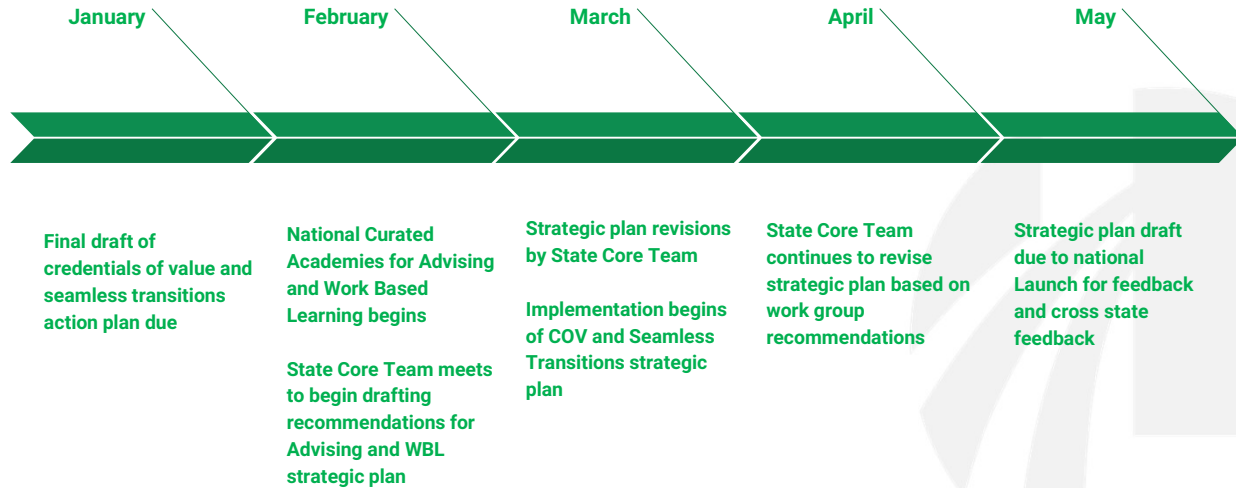
Amanda Wickersham, Lead
Fayette County Public Schools

Steve Coleman, Lead
Shelby County Public Schools

Kentucky Scope and Sequence Fall 2023



Kentucky Scope and Sequence Spring 2024



The screenshot shows the top portion of the LAUNCH website. At the top left is the LAUNCH logo. To its right are navigation links: Initiative, Sites, Partners, Funders, News, and Resources. On the far right is a search bar with the placeholder text "Enter your search". Below the navigation is a dark blue header section with the text "IMPACT Kentucky State Profile" and a white outline of the state of Kentucky. Underneath the header is a white box containing the text "Site Partners". Below that is the section title "Educational and Workforce Landscape". At the bottom of the page are three icons: a green house icon, a blue graduation cap icon, and a yellow group of people icon.

Questions?



Twitter: CPENews and CPEPres



Website: <http://cpe.ky.gov>



Facebook: KYCPE

